



Alberta Professional Planners Institute

PLANNING AWARDS

NWT Project



Planning Awards

- * Each year the Alberta Professional Planners Institute recognizes exemplary work within the planning profession.
- * Awards acknowledge meritorious plans and projects, undertaken in whole or in part by members of the Institute,
 - * that significantly contribute to the livability of communities in Alberta, the Northwest Territories and Nunavut.
- * **An Award of Planning Excellence** may only be granted to submissions that are outstanding, distinguished and demonstrate extraordinary merit in many, if not all, areas of focus.
- * **An Award of Planning Merit** may only be granted to submissions that are deemed to be very good and demonstrate value in any one or a number areas of focus.

Eligibility Requirements



Alberta Professional Planners Institute

Categories

1. Comprehensive and Policy Plan
2. Design Plan
3. Special Study
4. Education

Evaluation Criteria

- * Planning Process (20 %)
- * Originality, Innovation/Creativity/Outstanding Application (20%)
- * Transferability (15%)
- * Results (20%)
- * Significance/Impacts (15%)
- * Clarity of Presentation (10%)



TUKTOYAKTUK COMMUNITY PLAN AND ZONING BY-LAW REVISIONS

CATEGORY: COMPREHENSIVE AND POLICY PLAN



**NWT Nomination submitted :
April 10, 2019**

**Category: Comprehensive and
Policy Plan**





TUKTOYAKTUK
22/08/2007

Roles/Category

- * This planning process was led by the Hamlet of Tuktoyaktuk and supported by Margaret Kralt and Anne Peters, of Dillon Consulting Ltd.
- * Both Registered professional Planners with APPI
 - * And members of the Canadian Institute of Planners

Project Summary

Context

- * Tuktoyaktuk is a traditional Inuvialuit Arctic community
- * approximately 950 people which has received national and international attention because of its vulnerability to the rapidly changing climate .
 - * Shoeline Erosion and sea level rise

Erosion/Highway link

- * Various studies related to erosion progression and protection have been completed since the early 1970's by federal and territorial governments.
- * connecting canada , Coast to Coast to Coast



TORONTO STAR GRAPHIC

- **Inuvik to Tuktoyaktuk Highway**
 - 138 kilometre all season highway
- Opened on November 15, 2017 - four years of construction.

Planning Process

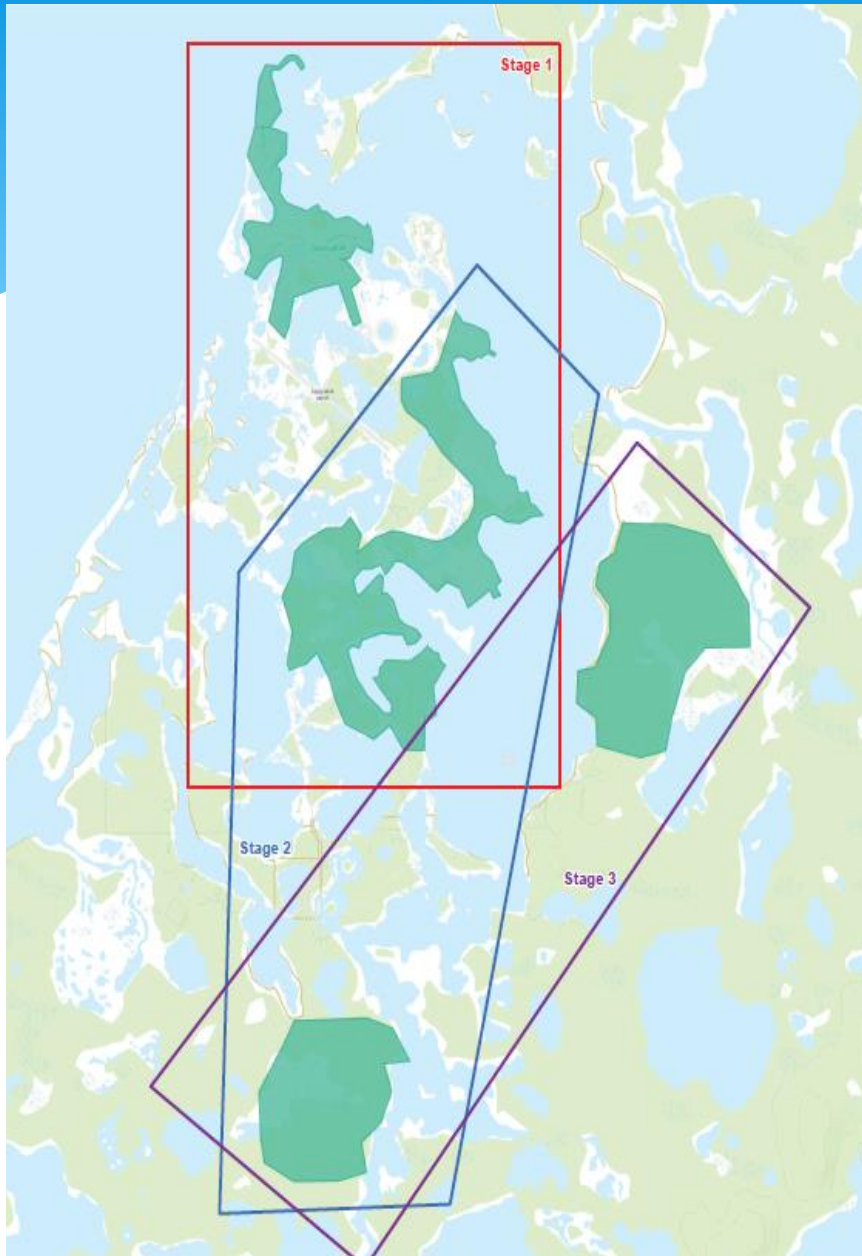
- * Hamlet Initiated the need to develop innovative and strict planning policies to address physical threats to existing infrastructure for
 - * Acknowledgement of the vulnerability to changing climate
 - * Opportunities to support growth and redevelopment
- * Alignment with the CIP Policy for Climate Change informed planning
- * Engagement approach – Inuvialuit Community

Originality, Innovation, Creativity. Outstanding Application

- * Plan considered a 50 year planning horizon
- * Linked to asset management
- * 3 phased approach to re-development
 - * Approach was different than the typical format of a community plan review
 - * Phased approach incorporated progressive timelines and encourage redevelopment based upon infrastructure life span cycles
 - * New all season highway provided unique opportunity to support phased re-development

Transferability

- * 3 Phased approach to redevelopment
 - * Considering Asset management cycles
- * A model approach for other communities experiencing similar vulnerabilities
 - * Flood risk, riverbank instability



Results

- * Community Plan process demonstrated leadership by the hamlet council in addressing challenge and looking ahead
- * Assisted to secure disaster mitigation funding
- * Zoning provides restrictive tool for local decision making for development in vulnerable areas.
- * Community implementing Goals and objectives of the plan

'They're trying to rush us': Tuktoyaktuk relocating homes too soon, says resident



Hamlet says they won't protect shoreline near houses they want to relocate this fall

[John Last](#) · CBC News · Posted: Aug 09, 2019 4:00 AM CT | Last Updated: August 9



Relocation of Homes

- * National Disaster Mitigation program
 - * Approved Federal funding made available to GNWT and Hamlet of Tuktoyaktuk to collect data, analyze wave action and ice information, development of mitigation options and cost estimates.
 - * Structural reports on identified houses that can be relocated, and cost estimates to relocate them to other areas.
 - * Work progressing on lot development and hiring qualified movers. 4 homes to be relocated

The Point

**4 Houses
located here**

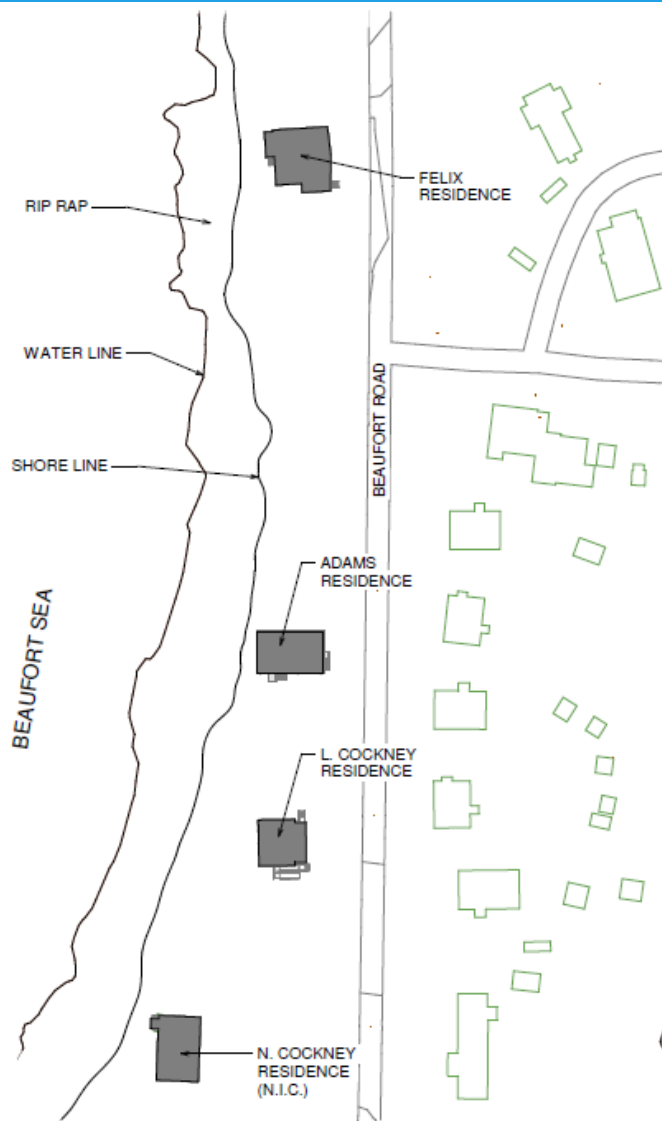


Approx. 6 km away

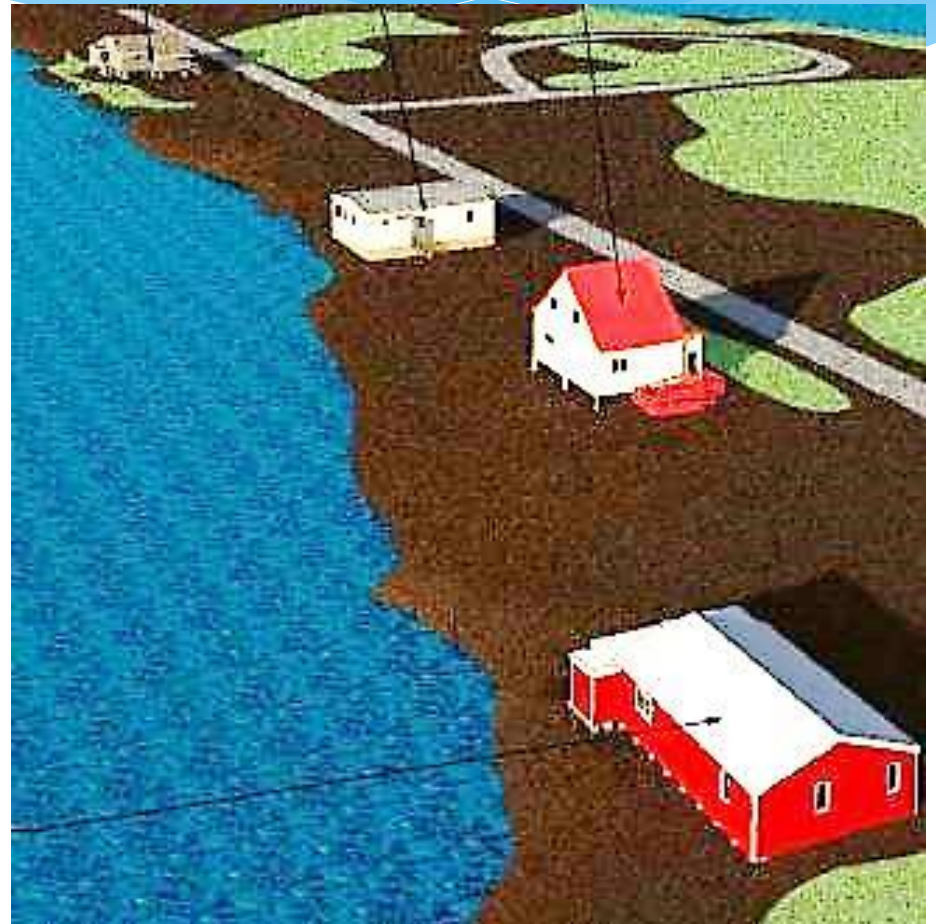


**Houses RE-located
here**

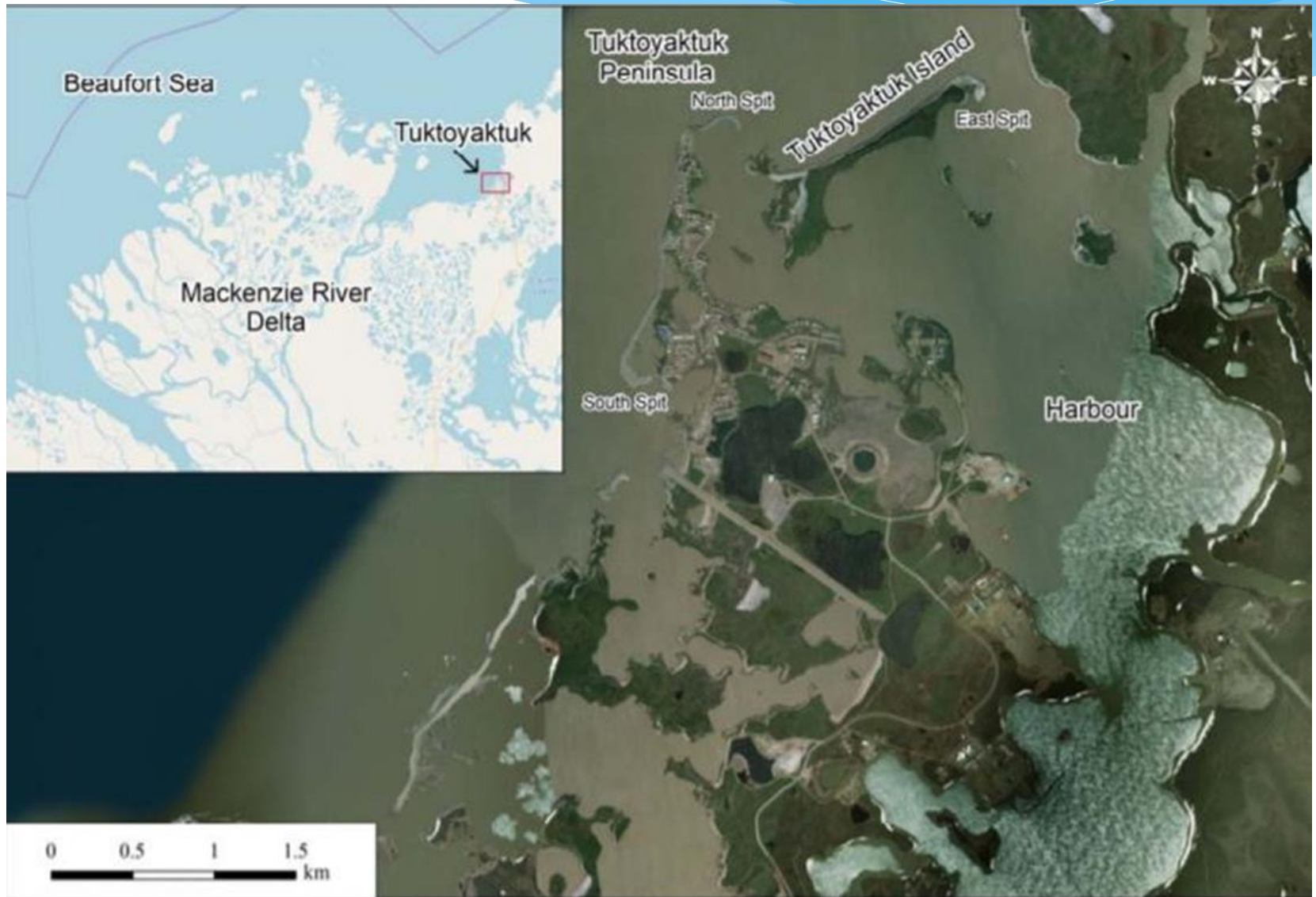
Reindeer Point Road



1 SITE PLAN - EXISTING LOCATION
A-2 1" = 40'-0"



4 houses are planned to be relocated



Clarity of Presentation

- * The planning documents
 - * Written in plain language
 - * Targeted audience , residents where English is a second language
 - * Clear and concise maps
 - * Visual images were incorporated to support plan development.

Significance, Impacts

- * Goal: develop resiliency to a changing climate
- * A livable community that can support new economic opportunities
- * The link to asset management, capital planning, disaster mitigation and economic development
- * The plan ties long range land use policies and physical re-development to the other planning processes supporting sustainability and resilience of the community to climate change



Mahsi Cho/Thank you

